



Parkfields
Estates



Dane Road, Southall, UB1 2ED
Asking Price £595,000



4



1

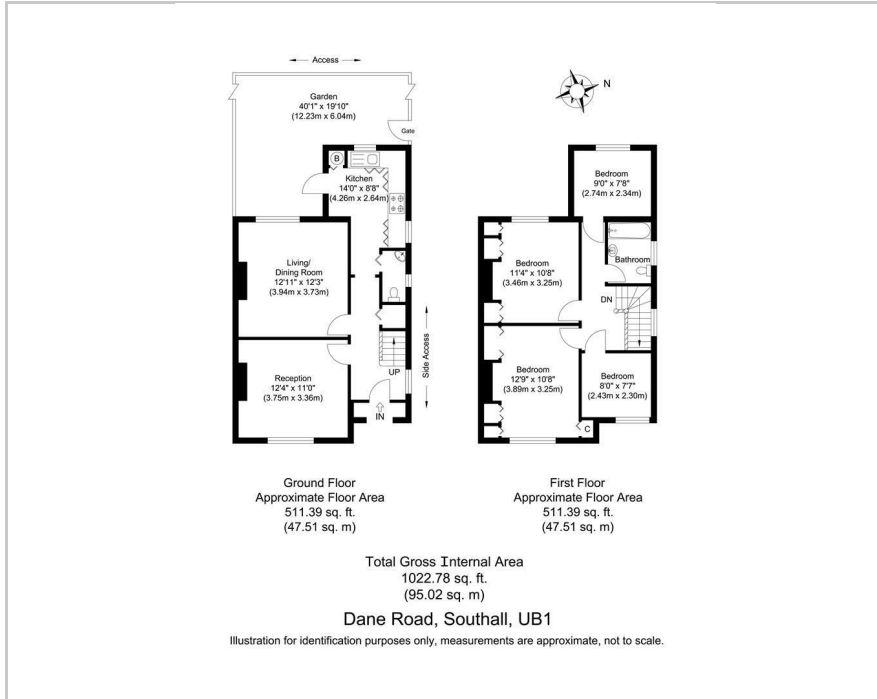


2



D

Floor Plan



Area Map



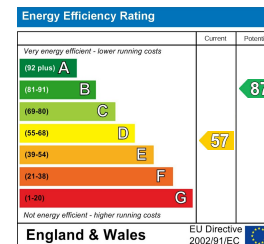
Accommodation

- END OF TERRACE
- FOUR BEDROOMS
- TWO RECEPTIONS
- RECENTLY FITTED KITCHEN
- CLOAKROOM & FAMILY BATHROOM / WC
- SIDE ACCESS RIGHT OF WAY WITH OFF STREET PARKING
- SCOPE TO EXTEND (STPP)
- JUST BY SOUTHALL BROADWAY
- ELIZABETH LINE 0.9 MILES
- TUDOR PRIMARY 0.3 MILES

Viewing

Please contact our Southall Office on 0208 571 0253 if you wish to arrange a viewing appointment for this property or require further information.

Energy Efficiency Graph



These particulars, whilst believed to be accurate are set out as a general outline only for guidance and do not constitute any part of an offer or contract. Intending purchasers should not rely on them as statements of representation of fact, but must satisfy themselves by inspection or otherwise as to their accuracy. No person in this firm's employment has the authority to make or give any representation or warranty in respect of the property.